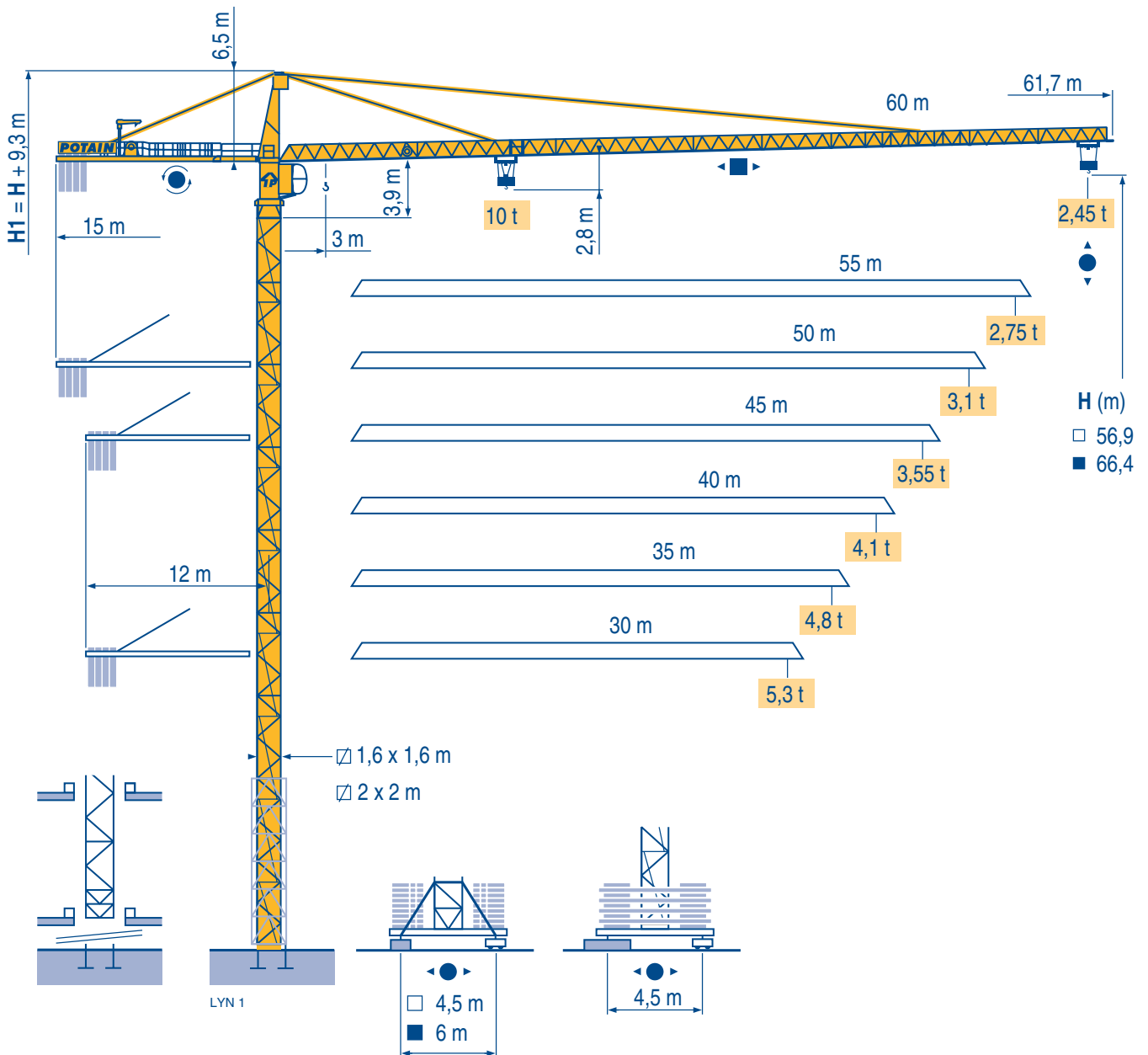


MD 208



Mat / Réactions \square 1,6 m

Maste / Eckdrücke \blacktriangle 30 m \Rightarrow 60 m

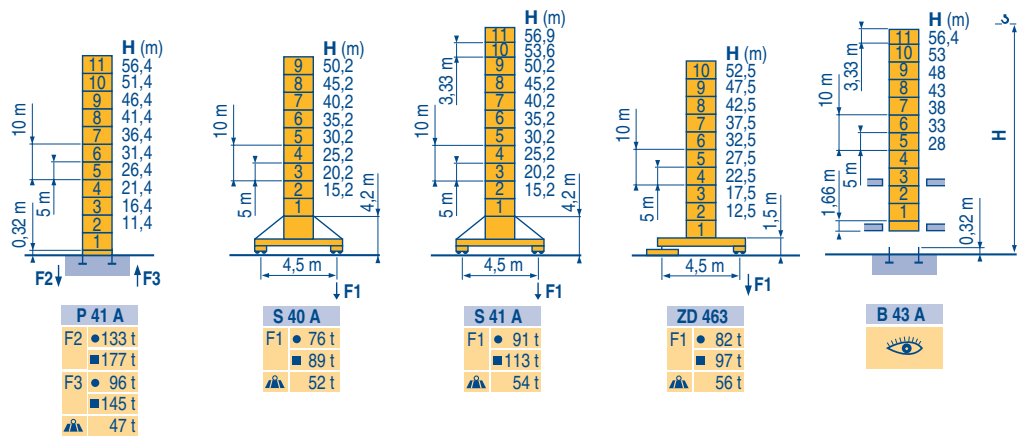
Masts / Reactions

Mástil / Reacciones

Torre / Reazioni

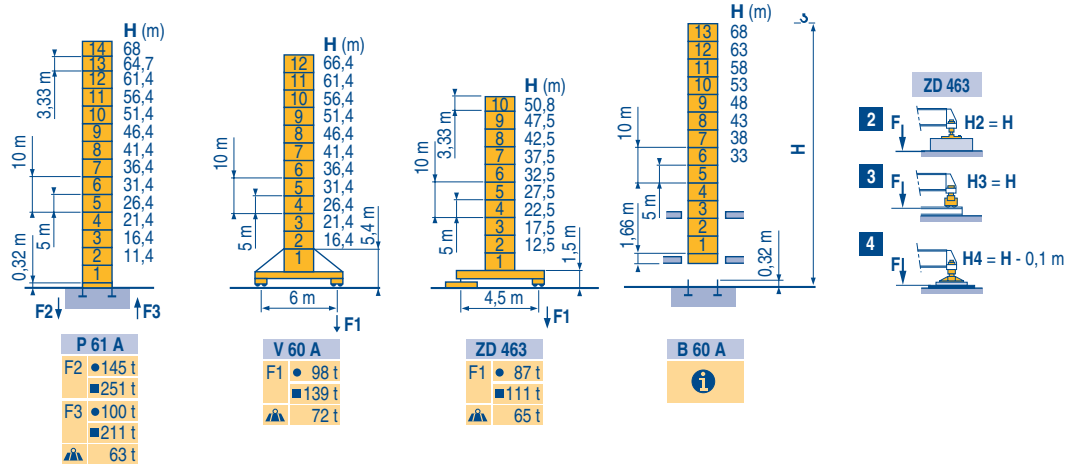
Tramo / Reações

LVN1



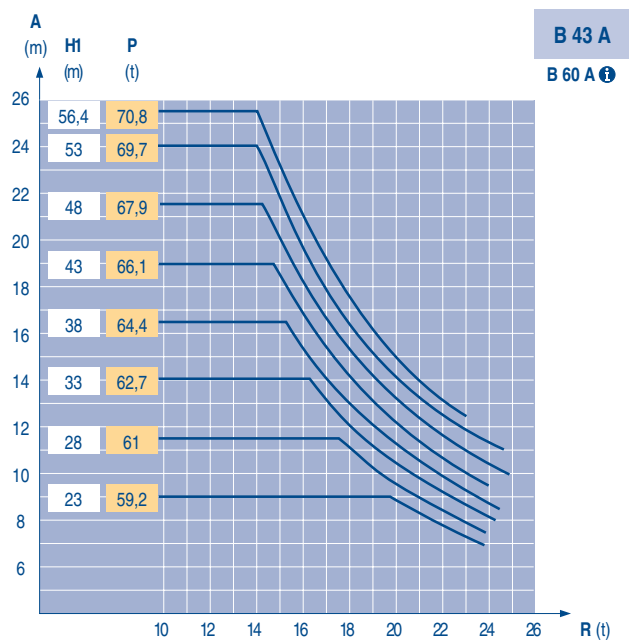
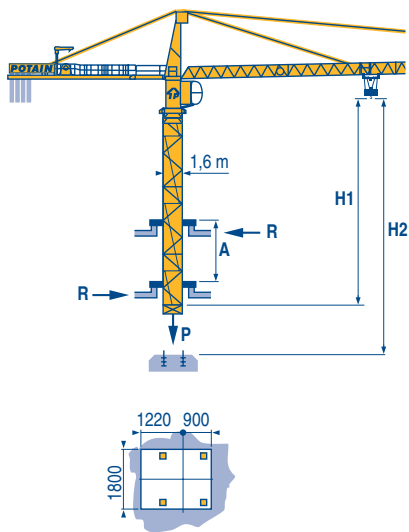
\square 2 m

\blacktriangle 30 m \Rightarrow 60 m



Télescopage sur dalles
Kletterkrane im Gebäude
Climbing crane
Telescopage gruas trepadoras
Gru in cavedio
Telescopagem sobre lages

LVN1



TOPKIT
MD 208

POTAIN

F

● Réactions en service
■ Réactions hors service
A vide sans lest (ni train de transport) avec flèche et hauteur maximum.

i

Nous consulter

D

Reaktionskräfte in Betrieb
Reaktionskräfte außer Betrieb
Ohne Last, Ballast (und Transportachse), mit Maximalausleger und Maximalhöhe.

Auf Anfrage

GB

Reactions in service
Reactions out of service
Without load, ballast (or transport axes), with maximum jib and maximum height.

Consult us

E

Reacciones en servicio
Reacciones fuera de servicio
Sin carga, sin lastre, (ni tren de transporte), flecha y altura máxima.

Consultarnos

I

Reazioni in servizio
Reazioni fuori servizio
A vuoto, senza zavorra (ne assali di trasporto) con braccio massimo e altezza massima.

Consultateci

P

Reações em serviço
Reações fora de serviço
Sem carga (nem tren de transporte) - sem lastro com lança e altura máximas.

Consultar-nos

Courbes de charges

Lastkurven

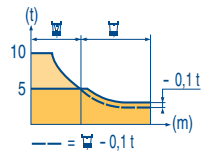
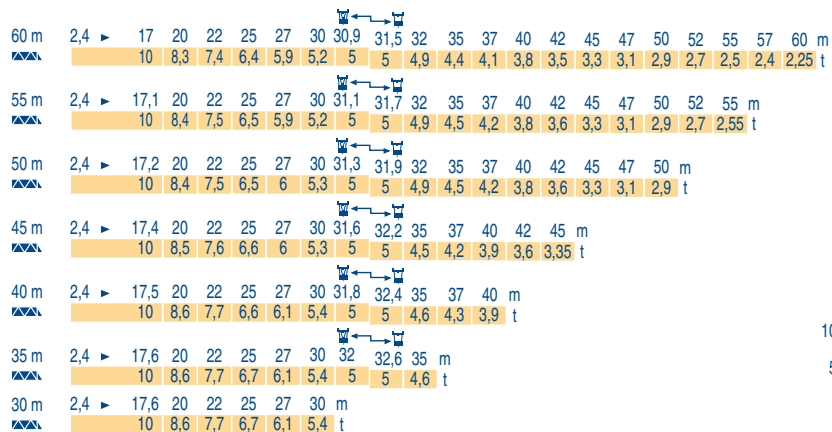
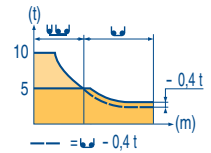
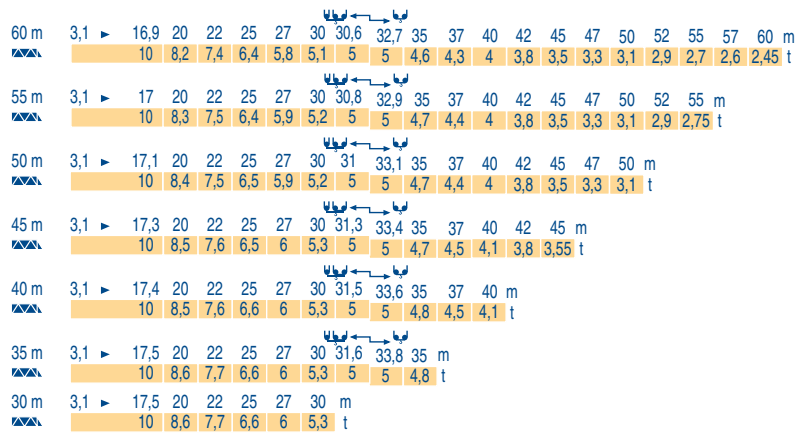
Load diagrams

Curvas de cargas

Curve di carico

Curva de cargas

LYN 1



Lest de contre-fleche

Gegenauslegerballast

Counter-jib ballast

Lastre de contra flecha

Contrappeso

Lastros da contra lança

LYN 1

Crane Height (m)	Jib Length (m)	4200 - 3400 - 2300 kg		4200 - 700 kg	
		33 LVF/50 LVF	kg	33 LVF/50 LVF	kg
60 m	15 m		16 800		16 100
55 m	15 m		14 100		14 000
50 m	15 m		13 300		12 600
45 m	12 m		16 000		16 100
40 m	12 m		14 900		14 700
35 m	12 m		12 600		12 600
30 m	12 m		11 000		11 200

Lest de base

Grundballast

Base ballast

Lastre de base

Zavorra di base

Lastros da base

LYN 1

1,6 m	S 40 A	H (m)	50,2	45,2	40,2	35,2	30,2	25,2	20,2	15,2			
			▲ (t)	78	60	60	60	60	60	60	60		
1,6 m	S 41 A	H (m)	56,9	53,6	50,2	45,2	40,2	35,2	30,2	25,2	15,2		
			▲ (t)	114	96	78	60	60	60	60	60	60	
1,6 m	ZD 463	H (m)	52,5	47,5	42,5	37,5	32,5	27,5	22,5	17,5	12,5		
			▲ (t)	90	65	55	55	55	55	55	55	55	
2 m	V 60 A	H (m)	66,4	61,4	56,4	51,4	46,4	41,4	36,4	31,4	26,4	21,4	16,4
			▲ (t)	132	108	84	60	48	24	24	24	24	24
2 m	ZD 463	H (m)	50,9	47,5	42,5	37,5	32,5	27,5	22,5	17,5	12,5		
			▲ (t)	95	80	50	50	50	50	50	50	50	

Ancrages

Verankerungen

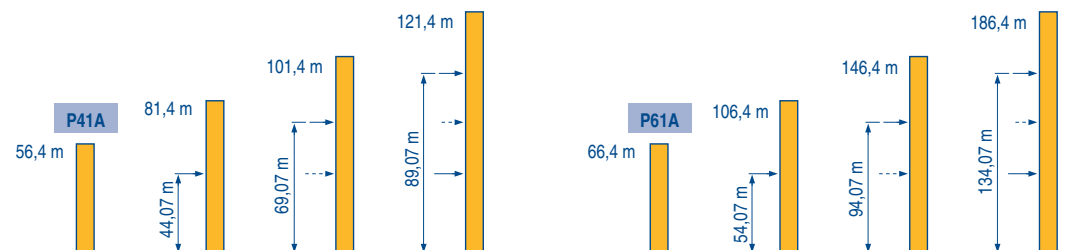
Anchorage

Anclaje

Ancoraggio

Ancoragem

LYN 1



TOPKIT MD 208

POTAIN

A

F

Distance entre cadres

D

Abstand zwischen den Rahmen

GB

Distance between collars

E

Distancia entra marcos

I

Distanza fra i telai

P

Distância entre quadros

H1

Hauteur grue

Kranhöhe

Crane height

Altura grúa

Altezza gru

Altura da grua

P

Poids de la grue(en service)

Krangewicht (in Betrieb)

Crane weight (in service)

Peso de la grúa (en servicio)

Peso della gru (in servizio)

Peso da grua (em serviço)

R

Réaction horizontale

Horizontalkräfte

Horizontal reaction

Reaccion horizontal

Reazione orizzontale

Reacção horizontal



Voir télescopage sur dalles












Siehe Kletterkrane im Gebäude

See climbing crane

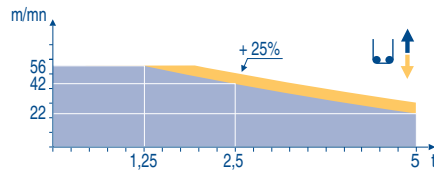
Veja grua trepadora

Consultare gru in cavedio

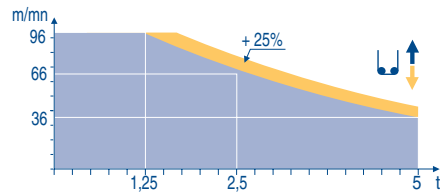
Ver telescopagem sobre lages







		U ↑					UU ↑					ch - PS hp	kW	
▲ ▼ 	33 LVF 25 Optima	m/min	1,8 → 7,4 → 22 → 28 → 42 → 56	0,9 → 3,7 → 11 → 14 → 21 → 28					30	22	321 m			
		t	5 5 5 3,75 2,5 1,25	10 10 10 7,5 5 2,5										
▲ ▼ 	50 LVF 25 Optima	m/min	3 → 12 → 36 → 46 → 66 → 96	1,5 → 6 → 18 → 23 → 33 → 48					50	37	557 m			
		t	5 5 5 3,75 2,5 1,25	10 10 10 7,5 5 2,5										
◀ ▶ 	7 DVF 4	m/min	0 → 79					6,5	4,8					
	RVF 152 Optima	tr/min U/min rpm	0 → 0,8					2 x 5,5	2 x 4					
S 40 A ◀ ▶ 	RT 324 R ≥ 10 m	m/min	12,5 - 25					2 x 7	2 x 5,2					
S 41 A ◀ ▶ 	RT 443 A1 2V R ≥ 10 m	m/min	15 - 30					4 x 5	4 x 3,7					
ZD 463 ◀ ▶ 	RT 443 A1 2V	m/min	15 - 30					4 x 5	4 x 3,7					
V 60 A ◀ ▶ 	RT 544 A1 2V R ≥ 13 m	m/min	13,5 - 27					4 x 7	4 x 5,2					
CEI 38 		IEC 38	STANDARD	kVA	PILOT									
400 V (+6% -10%) 50 Hz			33 LVF : 50 kVA 50 LVF : 70 kVA		50 LVF : 70 kVA	2000/14								

33 LVF 25
Optima



50 LVF 25
Optima



	F	D	GB	E	I	P
	Levage	Heben	Hoisting	Elevación	Sollevamento	Elevação
	Distribution	Katzfahren	Trolleying	Distribución	Distribuzione	Distribuição
	Orientation	Schwenken	Slewing	Orientación	Rotazione	Rotação
	Translation	Kranfahren	Travelling	Traslación	Traslazione	Translação
	Conforme aux directives CEE sur le niveau acoustique	Gemäss EWG-Richtlinien für den Schall-Leistungspegel	In compliance with the EEC Instructions on noise level	Conforme con las directivas CEE sobre el nivel acustico	Conforme alle direttive CEE sul livello acustico	Conforme as directivas CEE sobre o nível acústico
	Fonction Dialog Pilot possible	Funktion Dialog Pilot möglich	Dialog Pilot function possible	Función Dialog Pilot Posible	Possibilità di funzione Dialog Pilot	Função Dialog Pilot possível



Document commercial non contractuel. Pour toute information technique se référer à la notice correspondante

Unverbindliches Vertriebsdokument. Für technische Informationen, siehe die entsprechenden Anweisungen.

This commercial document is not legally binding. For any technical information, please refer to the corresponding instructions.

Documento comercial no contractuel. Para cualquier información técnica, ver la noticia correspondiente.

Documento commerciale non vincolante, per tutte le informazioni tecniche fare riferimento al catalogo istruzioni

Documento comercial não contractual. Para qualquer informação técnica complementar consultar as respectivas instruções

Manitowoc
Crane CARE

POTAIN 
Manitowoc Crane Group



Americas

Tel: +1 920 683 6322
Tel: +1 717 597 8121

Europe - Middle East - Africa

Tel: +(33) 4 72 81 50 00
Tel: +(44) 191 565 6281

Asia - Pacific

Tel: +(65) 6861 7133
Fax: +(65) 6862 4142

www.manitowoccrane.com

18, rue de Charbonnières - B.P.173
69132 ECULLY Cedex - France

Tél. : (33) 4 72 18 20 20
Fax. : (33) 4 72 18 20 00
www.manitowoccrane.com www.potain.com

TOPKIT MD 208

Réf. 2003 48 LYN 1

Copyright.Reproduction interdite © POTAIN 2003